



March 2017

 *Price List*

Commercial Refrigeration

MVP
GROUP

MVP Group Corporation

Head Office: 5659 Royalmount Ave., Montreal, Qc, Canada H4P 2P9

TEL: (514) 737-9701 • TOLL FREE: (888) 275-4538

FAX: (514) 342-3854 • TOLL FREE FAX: (877) 453-8832

US Sales Office: 12000 Biscayne Blvd, Suite 108, Miami, FL 33181

TEL: (786) 600-4687 • TOLL FREE: (844) 218-8477 • FAX: (786) 661-4100

mvpgroupcorp.com • sales@mvpgroupcorp.com



Intertek



Intertek

HYDRA-KOOL is a registered trade mark of MVP Group.
Specifications subject to change without notice.

BAKERY CASES - FORCED AIR

KBD-CG Series

- Tilt forward curved front tempered glass
- LED lighting all shelves
- Rear sliding access doors
- Tempered glass rear sliding doors
- Digital controller
- Anti-condensate system for front glass
- Voltage : 115/60/1
- * 220/50Hz Available as option

KBD-CG-40-S \$15 310	KBD-CG-40-R \$13 580	**KBD-CG-40-D \$10 360
KBD-CG-50-S \$15 880	KBD-CG-50-R \$14 500	**KBD-CG-50-D \$10 860
KBD-CG-60-S \$17 230	KBD-CG-60-R \$15 160	**KBD-CG-60-D \$11 510
**KBD-CG-80-S \$19 230	**KBD-CG-80-R \$17 310	**KBD-CG-80-D \$13 220

** Not exactly as shown



BAKERY CASES - FORCED AIR

KBD-FG Series

- Tilt forward flat front tempered glass
- LED lighting all shelves
- Rear sliding access doors
- Tempered glass rear sliding doors
- Digital controller
- Anti-condensate system for front glass
- Voltage : 115/60/1
- * 220/50Hz Available as option

KBD-FG-40-S \$16 480	KBD-FG-40-R \$14 620	**KBD-FG-40-D \$10 360
KBD-FG-50-S \$17 540	KBD-FG-50-R \$15 610	**KBD-FG-50-D \$10 860
KBD-FG-60-S \$18 560	KBD-FG-60-R \$16 320	**KBD-FG-60-D \$11 510

** Not exactly as shown



OPEN MERCHANDISERS - HIGH PROFILE

KGH-OF Series

- High density CFC-Free foamed ends-superior insulation
- LED lighting in canopy & under all shelves
- Slide out condensing unit on S/C for easy maintenance
- Digital controller
- Standard pull-down night shade
- Voltage : 30-40-50 Models 115/60/1
60-80-100 Models 115/60/1 + 230/60/1
- * 220/50Hz Available as option

KGH-OF-30-S \$15 900	KGH-OF-30-R \$13 630
KGH-OF-40-S \$17 700	KGH-OF-40-R \$14 820
KGH-OF-50-S \$18 650	KGH-OF-50-R \$15 300
KGH-OF-60-S \$20 450	KGH-OF-60-R \$17 640
KGH-OF-80-S \$25 360	KGH-OF-80-R \$20 340
KGH-OF-100-S \$35 780	KGH-OF-100-R \$27 050



OPEN MERCHANDISERS - HIGH PROFILE

KGH-ES Series with Electric Shutter

- Electric locking shutter-key operated
- LED lighting in canopy & under all shelves
- Digital controller
- High density CFC-free foamed ends-superior insulation
- Slide out condensing unit on S/C for easy maintenance
- Voltage: 30-40-50 models 115/60/1
60-80-100 models 115/60/1 + 230/60/1
- * 220/50Hz Available as option

KGH-ES-30-S \$18 130	KGH-ES-30-R \$15 860
KGH-ES-40-S \$20 030	KGH-ES-40-R \$17 150
KGH-ES-50-S \$21 000	KGH-ES-50-R \$17 650
KGH-ES-60-S \$22 950	KGH-ES-60-R \$20 140
KGH-ES-80-S \$28 150	KGH-ES-80-R \$23 130
KGH-ES-100-S \$40 470	KGH-ES-100-R \$31 740



OPEN MERCHANDISERS - LOW PROFILE

KGL-OF Series

- High density CFC-Free foamed ends-superior insulation
- LED lighting in canopy & under all shelves
- Slide out condensing unit on S/C for easy maintenance
- Temperature and defrost regulated by a digital controller
- Standard pull-down night shade
- Voltage : 115/60/1
- * 220/50Hz Available as option

KGL-OF-40-S \$15 630	KGL-OF-40-R \$13 770
KGL-OF-50-S \$16 970	KGL-OF-50-R \$14 810
KGL-OF-60-S \$18 130	KGL-OF-60-R \$15 910



OPEN MERCHANDISERS - LOW PROFILE

KGL-RS Series

- Locking back doors for rear loading
- Key operated electric shutter
- Digital temperature data logger
- LED lighting in canopy and under all shelves
- Temperature and defrost regulated by a digital controller
- Removable condensate evaporative pan for easy cleaning
- Height adjustable shelves can be tilted
- Product stops on all shelves
- Voltage: 115/60/1
- *220/50 Hz available as option

KGL-RS-40-S \$21 890	KGL-RS-40-R \$20 860
KGL-RS-60-S \$25 500	KGL-RS-60-R \$23 760



OVER / UNDER - COMBINATION TYPE CASE

KGL-OU Series

- Upper section can be operated as refrigerated OR dry
- Tempered glass, rear sliding doors in upper section
- Open front, front loading lower section
- LED lighting in canopy and under all shelves
- Height adjustable shelves can be tilted
- Rear serving shelf
- Temperature and defrost regulated by a digital controller
- Removable condensate evaporative pan for easy cleaning
- Slide out condensing unit for easy maintenance
- Voltage: 115/60/1
- *220/50 Hz available as option

KGL-OU-48-S \$22 980	KGL-OU-48-R \$21 770
KGL-OU-60-S \$24 480	KGL-OU-60-R \$23 120
KGL-OU-72-S \$25 990	KGL-OU-72-R \$24 480



GELATO CASES

KFM-GL Series

- Lift-up front glass
- Rear tempered sliding glass doors
- Full interior fabricated of stainless steel
- Voltage : 115/60/1
- * 220/50Hz Available as option

KFM-GL-40-S \$35 180
KFM-GL-60-S \$45 470
KFM-GL-80-S \$63 490



DELI CASES - FRESH MEATS

KFM-CG Series

- Tilt forward front tempered glass
- Rear tempered sliding glass doors
- Special coil with low velocity fans
- Stainless steel interior
- Pull-out condensing unit
- Digital controller
- Anti-condensate system for front glass
- LED canopy lighting
- Voltage : 115/60/1

* 220/50Hz Available as option

When ordering, please specify
KFM-CG (curved glass) or KFM-FG (flat glass)

KFM-CG-40-S KFM-CG-40-R
\$14 200 \$13 210

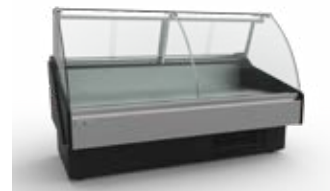
KFM-CG-50-S KFM-CG-50-R
\$15 500 \$14 260

KFM-CG-60-S KFM-CG-60-R
\$16 450 \$14 920

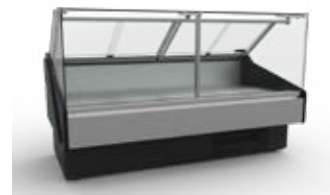
KFM-CG-80-S KFM-CG-80-R
\$19 830 \$17 690

KFM-CG-100-S KFM-CG-100-R
\$21 950 \$19 560

KFM-CG-120-S KFM-CG-120-R
\$24 500 \$21 860



Standard **CG** Curved Glass



Optional **FG** Flat Glass

DELI-CASES - OPEN FRONT

KFM-OF Series

- Tempered front & side glass
- Special coil with low velocity fans
- Stainless steel interior
- Pull-out condensing unit
- Digital controller
- Voltage : 115/60/1

* 220/50Hz Available as option

KFM-OF-40-S KFM-OF-40-R
\$13 300 \$12 310

KFM-OF-50-S KFM-OF-50-R
\$14 360 \$13 120

KFM-OF-60-S KFM-OF-60-R
\$15 020 \$13 480

KFM-OF-80-S KFM-OF-80-R
\$17 480 \$15 350

KFM-OF-100-S KFM-OF-100-R
\$19 290 \$16 900

KFM-OF-120-S KFM-OF-120-R
\$21 540 \$18 890



SEAFOOD CASES - CLOSED FRONT

KFM-SC Series

- Tilt forward front tempered glass
- Rear tempered sliding glass doors
- Special coil with low velocity fans
- Stainless steel interior
- Pull-out condensing unit
- Digital controller
- Anti-condensate system for front glass
- LED canopy lighting
- Ice / Fish pans optional
- Cases require floor drains
- Voltage : 115/60/1

* 220/50Hz Available as option

When ordering, please specify
KFM-SC (curved glass) or KFM-SF (flat glass)

KFM-SC-40-S KFM-SC-40-R
\$17 040 \$15 850

KFM-SC-50-S KFM-SC-50-R
\$18 590 \$17 110

KFM-SC-60-S KFM-SC-60-R
\$19 740 \$17 890

KFM-SC-80-S KFM-SC-80-R
\$23 790 \$21 230

KFM-SC-100-S KFM-SC-100-R
\$26 330 \$23 470

KFM-SC-120-S KFM-SC-120-R
\$29 410 \$26 230



Standard **SC** Curved Glass



Optional **SF** Flat glass

SEAFOOD CASES - OPEN FRONT

KFM-SO Series

- Low velocity forced air refrigeration maintains high humidity
- Stainless steel interior
- Silver colored PVC coated steel front panel with black steel kick plate
- CFC free injected foam insulation
- Foamed polystyrene black end panels
- Temperature and defrost regulated by a digital controller
- Slide out condensing unit on S/C only
- Digital thermometer
- Cases require floor drains
- Ice / fish pans optional
- Voltage: 115/60/1

*220/50 Hz available as option

KFM-SO-40-S
\$15 970

KFM-SO-40-R
\$14 770

KFM-SO-50-S
\$17 230

KFM-SO-50-R
\$15 740

KFM-SO-60-S
\$18 020

KFM-SO-60-R
\$16 170

KFM-SO-80-S
\$20 970

KFM-SO-80-R
\$18 410

KFM-SO-100-S
\$23 150

KFM-SO-100-R
\$20 280

KFM-SO-120-S
\$25 850

KFM-SO-120-R
\$22 680



DELI CASES - PACKAGED MEATS

KPM-CG Series

- Tilt forward front tempered glass
- Rear tempered sliding glass doors
- Refrigerated rear storage compartment(s)
- Pull-out condensing unit
- Digital controller
- Anti-condensate system for front glass
- LED canopy lighting
- Voltage : 115/60/1

* 220/50Hz Available as option

When ordering, please specify
KPM-CG (curved glass) or KPM-FG (flat glass)

KPM-CG-60-S
\$17 520

KPM-CG-60-R
\$16 290

KPM-CG-80-S
\$19 490

KPM-CG-80-R
\$17 750

KPM-CG-100-S
\$22 610

KPM-CG-100-R
\$20 520



Standard **CG** Curved Glass



Optional **FG** Flat Glass

DELI CASES - OPEN FRONT

KPM-OF Series

- Tempered front & side glass
- Refrigerated rear storage compartment(s)
- Pull-out condensing unit
- Digital controller
- Voltage : 115/60/1

* 220/50Hz Available as option

KPM-OF-60-S
\$16 590

KPM-OF-60-R
\$15 100

KPM-OF-80-S
\$17 200

KPM-OF-80-R
\$15 450

KPM-OF-100-S
\$20 360

KPM-OF-100-R
\$17 930



WALL-TYPE CASES

KGV Series



Self-contained



Remote



Open Front

- High volume cases in 3 different styles
- LED lighting under canopy and all shelves
- High density CFC-Free foamed ends-superior insulation

- LED lighting in all doors
- Voltage : 115/60/1 for S/C units of 2+3 doors and all remote units
- ** S/C units of 4 doors and more require two (2) individual 115/60/1 circuits
- * 220/50Hz Available as option

Medium Temperature Front Doors Only

KGV-MD-2-S \$20 010	KGV-MD-2-R \$17 400
KGV-MD-3-S \$24 620	KGV-MD-3-R \$21 410
**KGV-MD-4-S \$38 460	KGV-MD-4-R \$33 450
**KGV-MD-5-S \$42 310	KGV-MD-5-R \$36 800
**KGV-MD-6-S \$46 160	KGV-MD-6-R \$40 130

Medium Temperature Front & Rear Doors

KGV-MR-2-S \$24 470	KGV-MR-2-R \$22 040
KGV-MR-3-S \$31 720	KGV-MR-3-R \$28 570
**KGV-MR-4-S \$47 290	KGV-MR-4-R \$42 610
**KGV-MR-5-S \$54 230	KGV-MR-5-R \$48 860
**KGV-MR-6-S \$60 930	KGV-MR-6-R \$54 890

Medium Temperature Open Front - Remote Only

KGV-MO-2-R \$15 940
KGV-MO-3-R \$20 320
KGV-MO-4-R \$29 410
KGV-MO-5-R \$32 860
KGV-MO-6-R \$36 290

Cases are shipped in 2 & 3 door or 51-1/2" & 75-3/8" modules

Options for all models

- Custom color finish – Require Pantone or RAL color - Upcharge of 10%
- Interior of any model in stainless steel finish – Upcharge of 10%
- Exterior of any model in stainless steel finish – Upcharge of 10%
- Lift-up system of front glass | 40" \$1 680 | 50" \$1 750 | 60" \$1 940 | 80" \$2 290 | 100" \$2 370 | 120" \$2 520

Accessories

Adjustable Stainless Steel Legs (Set of 4)

KT001A	ALL KPM - KFM - KGL - KGH - KBD	\$240
--------	---------------------------------	-------

Locking Casters (Set of 4)

KT002A	ALL KPM - KFM - KGL - KGH - KBD	\$330
--------	---------------------------------	-------

Joining Kit

KT003A	ALL KPM AND KFM	\$2 140
KT003B	ALL KPM AND KFM OPEN CASES	\$2 140
KT003C	ALL KBD	\$240
KT003D	ALL KGH	\$240
KT003E	ALL KGL	\$240
KT003F	ALL KGV	\$240

Partition

KT004A	ALL KPM AND KFM	\$980
KT004B	ALL KPM AND KFM OPEN CASES	\$740
KT004C	ALL KBD	\$1 160
KT004D	ALL KGH	\$420
KT004E	ALL KGL	\$530
KT004F	ALL KGV	\$330

Scale Stand With Receptacle

KT005A	ALL KPM AND KFM	\$470
KT005B	ALL KPM AND KFM OPEN CASES	\$470
KT005C	ALL KBD	\$470

Cutting Board

KT006A	ALL KPM AND KFM	\$620
--------	-----------------	-------

Utensil Holder

KT007A	ALL KPM AND KFM	\$350
--------	-----------------	-------

Product Dividers

KT008A	ALL KPM AND KFM	\$150
KT008B	ALL KBD	\$130
KT008C	ALL KGH	\$130
KT008D	ALL KGL	\$130
KT008E	ALL KGV	\$130

Condensate Evaporative Pans

KT009A	ALL KPM - KFM - KBD	\$1 390
KT009B	ALL KGL AND KGH	\$1 430

Ice / Fish Pans For Seafood Cases

KT-025A	40"	KFM-SC / KFM-SF / KFM-SO	\$810
KT-025B	50"	KFM-SC / KFM-SF / KFM-SO	\$980
KT-025C	60"	KFM-SC / KFM-SF / KFM-SO	\$1 160
KT-025D	80"	KFM-SC / KFM-SF / KFM-SO	\$1 620
KT-025E	100"	KFM-SC / KFM-SF / KFM-SO	\$1 970
KT-025F	120"	KFM-SC / KFM-SF / KFM-SO	\$2 320

Wire Racks

KT010A	EPOXY	KFM - 40	\$420
KT010B	STAINLESS STEEL	KFM - 40	\$730
KT010C	EPOXY	KFM - 50	\$620
KT010D	STAINLESS STEEL	KFM - 50	\$1 100
KT010E	EPOXY	KFM AND KPM - 60	\$620
KT010F	STAINLESS STEEL	KFM AND KPM - 60	\$1 100
KT010G	EPOXY	KFM AND KPM - 80	\$830
KT010H	STAINLESS STEEL	KFM AND KPM - 80	\$1 460
KT010I	EPOXY	KFM AND KPM - 100	\$1 240
KT010J	STAINLESS STEEL	KFM AND KPM - 100	\$2 190
KT010K	EPOXY	KFM - 120	\$1 240
KT010L	STAINLESS STEEL	KFM - 120	\$2 190

Step Racks - Single Level

KT011A	GRAY	KFM - 40	\$240
KT011B	STAINLESS STEEL	KFM - 40	\$420
KT011C	GRAY	KFM - 50	\$360
KT011D	STAINLESS STEEL	KFM - 50	\$620
KT011E	GRAY	KFM AND KPM - 60	\$420
KT011F	STAINLESS STEEL	KFM AND KPM - 60	\$620
KT011G	GRAY	KFM AND KPM - 80	\$470
KT011H	STAINLESS STEEL	KFM AND KPM - 80	\$830
KT011I	GRAY	KFM AND KPM - 100	\$590
KT011J	STAINLESS STEEL	KFM AND KPM - 100	\$1 240
KT011K	GRAY	KFM - 120	\$710
KT011L	STAINLESS STEEL	KFM - 120	\$1 240

Step Racks - Two Level

KT012A	GRAY	KFM - 40	\$380
KT012B	STAINLESS STEEL	KFM - 40	\$640
KT012C	GRAY	KFM - 50	\$560
KT012D	STAINLESS STEEL	KFM - 50	\$950
KT012E	GRAY	KFM AND KPM - 60	\$620
KT012F	STAINLESS STEEL	KFM AND KPM - 60	\$1 000
KT012G	GRAY	KFM AND KPM - 80	\$750
KT012H	STAINLESS STEEL	KFM AND KPM - 80	\$1 270
KT012I	GRAY	KFM AND KPM - 100	\$1 120
KT012J	STAINLESS STEEL	KFM AND KPM - 100	\$1 900
KT012K	GRAY	KFM - 120	\$1 240
KT012L	STAINLESS STEEL	KFM - 120	\$2 000

Terms & Conditions

Shipment: (F.O.B.)	Montreal, QC
Shipping class	150 - Insured Cargo
Terms	2%-10 days OR Net 30 days upon approved credit. All Remote, Flat Glass, KFM-OF, KPM-OF, KGH-SO, Gelato, Seafood, KGV and Custom cases are available by Special Order and require a 25% non-refundable deposit.
Returns	All returns are subject to a minimum of 35% restocking fee. ** All merchandise must have a return authorization (RMA) issued by MVP ** Must have original packing.
Pricing	All prices shown are list. MVP GROUP CORP. assumes no responsibility for carrier rates or charges, nor will it make any allowance for prices from freight charges. Prices are subject to change without any notice, and as exist at time of shipment. Export duties and overseas shipping costs not included in prices listed.
Damages	Merchandise must be inspected <u>prior to the carrier leaving your premises</u> . Damage must be noted in writing on the BOL and pictures must be taken at this time. - For any goods shipped prepaid by MVP Group Corp., and the goods are damaged and/or lost in transit, please call the Logistics Department at MVP immediately (1-888-275-4538 x. 333). - MVP Group Corp. will not be held responsible for damages that are not notated on the BOL or not reported within 5 business days of being delivered. - For goods shipped via 3rd party carrier, any claim for damages or loss must be made by the consignee directly with the carrier. MVP Group Corp. assumes no responsibility for damage or loss while in transit.
Shipment	Whenever feasible, preferred carrier will be used, however we reserve to the right to ship via any responsible carrier. (Air ride suspension - recommended) Rate charges or discrepancies are between carrier and consignee. Returns are not acceptable unless authorized by the factory main office, in writing and RMA is issued. These conditions are the terms upon which an order is accepted and constitutes an Agreement of Sales. MVP GROUP CORP. assumes no responsibility for the product when misused, abused, or incorrectly applied. In any such instance, the warranty becomes null and void.

Warranty

ONE YEAR PARTS & LABOUR WARRANTY*

MVP GROUP CORP. (HYDRA-KOOL) warrants to the original purchaser of every new HYDRA-KOOL refrigerated unit to be free from defects in material or workmanship, under normal and proper use and maintenance service as specified by MVP Group Corp. and upon proper installation and start-up in accordance with the instruction packet supplied with each unit. MVP Group's obligation under this warranty is limited to a period of one (1) year from the date of original installation.

Any original part covered under this warranty that are determined by MVP Group Corp. to have been defective within one (1) year of original installation shall be limited to the repair or replacement, including the labour charge for defective parts or assemblies. The labour warranty shall include standard straight time labour charges only and reasonable travel time, as determined by MVP Group Corp.

Warranty shall not cover standard wear and tear parts which include door gaskets, incandescent bulbs, LED lamps, or fluorescent bulbs. Warranty also does not cover issues caused by improper installation or lack of basic preventative maintenance which includes, but not limited to regular cleaning of condenser coils.

ADDITIONAL FOUR YEAR COMPRESSOR WARRANTY

In addition to the one (1) year warranty stated above, MVP Group Corp. hereby warrants its hermetically and semi-hermetically sealed compressors to be free from defects in both material and workmanship under normal and proper use and maintenance service for a period of four (4) additional years from the date of original installation, but shall at no times exceed five (5) years after shipment from the manufacturer.

Compressors determined by MVP Group Corp. to have been defective within this extended time period will, at MVP Group Corp's option, be either repaired or replaced with a compressor or compressor parts of a similar capacity.

The four (4) year extended compressor warranty applies only to hermetically and semi-hermetically sealed parts of the compressor and does not apply to any other parts or components, including, but not limited to: cabinet, paint finish, temperature control, refrigerant, metering device, driers, motor starting equipment, fan assembly or any other electrical component, etc.

***RESIDENTIAL APPLICATIONS:** MVP GROUP CORP. assumes no responsibility nor liability for any parts, or labour coverage for component failure, or other damage resulting from installation in residential or non-commercial applications.