



***March 2017***  
***Price List***  
***Commercial Refrigeration***



MVP Group Corporation

**Head Office:** 5659 Royalmount Ave., Montreal, Qc, Canada H4P 2P9

TEL: (514) 737-9701 • TOLL FREE: (888) 275-4538

FAX: (514) 342-3854 • TOLL FREE FAX: (877) 453-8832

**US Sales Office:** 12000 Biscayne Blvd, Suite 108, Miami, FL 33181

TEL: (786) 600-4687 • TOLL FREE: (844) 218-8477 • FAX: (786) 661-4100

[mvpgroupcorp.com](http://mvpgroupcorp.com) • [sales@mvpgroupcorp.com](mailto:sales@mvpgroupcorp.com)



HYDRA-KOOL is a registered trade mark of MVP Group.  
Specifications subject to change without notice.

## BAKERY CASES - FORCED AIR

### KBD-CG Series

- Tilt forward curved front tempered glass
- LED lighting all shelves
- Rear sliding access doors
- Tempered glass rear sliding doors
- Digital controller
- Anti-condensate system for front glass
- Voltage : 115/60/1

\* 220/50Hz Available as option

|                           |                           |                           |
|---------------------------|---------------------------|---------------------------|
| KBD-CG-40-S<br>\$13 010   | KBD-CG-40-R<br>\$11 530   | **KBD-CG-40-D<br>\$8 800  |
| KBD-CG-50-S<br>\$13 820   | KBD-CG-50-R<br>\$12 320   | **KBD-CG-50-D<br>\$9 230  |
| KBD-CG-60-S<br>\$14 640   | KBD-CG-60-R<br>\$12 880   | **KBD-CG-60-D<br>\$9 780  |
| **KBD-CG-80-S<br>\$16 340 | **KBD-CG-80-R<br>\$14 710 | **KBD-CG-80-D<br>\$11 230 |

\*\* Not exactly as shown



## BAKERY CASES - FORCED AIR

### KBD-FG Series

- Tilt forward flat front tempered glass
- LED lighting all shelves
- Rear sliding access doors
- Tempered glass rear sliding doors
- Digital controller
- Anti-condensate system for front glass
- Voltage : 115/60/1

\* 220/50Hz Available as option

|                         |                         |                          |
|-------------------------|-------------------------|--------------------------|
| KBD-FG-40-S<br>\$13 660 | KBD-FG-40-R<br>\$12 100 | **KBD-FG-40-D<br>\$8 800 |
| KBD-FG-50-S<br>\$14 510 | KBD-FG-50-R<br>\$12 940 | **KBD-FG-50-D<br>\$9 230 |
| KBD-FG-60-S<br>\$15 360 | KBD-FG-60-R<br>\$13 520 | **KBD-FG-60-D<br>\$9 780 |

\*\* Not exactly as shown



## OPEN MERCHANDISERS - HIGH PROFILE

### KGH-OF Series

- High density CFC-Free foamed ends-superior insulation
- LED lighting in canopy & under all shelves
- Slide out condensing unit on S/C for easy maintenance
- Digital controller
- Standard pull-down night shade
- Voltage : 30-40-50 Models 115/60/1  
60-80-100 Models 115/60/1 + 230/60/1

\* 220/50Hz Available as option

|                          |                          |
|--------------------------|--------------------------|
| KGH-OF-30-S<br>\$12 930  | KGH-OF-30-R<br>\$11 110  |
| KGH-OF-40-S<br>\$14 440  | KGH-OF-40-R<br>\$12 090  |
| KGH-OF-50-S<br>\$15 200  | KGH-OF-50-R<br>\$12 480  |
| KGH-OF-60-S<br>\$16 680  | KGH-OF-60-R<br>\$14 390  |
| KGH-OF-80-S<br>\$20 680  | KGH-OF-80-R<br>\$16 600  |
| KGH-OF-100-S<br>\$29 190 | KGH-OF-100-R<br>\$22 070 |



## OPEN MERCHANDISERS - HIGH PROFILE

### KGH-ES Series with Electric Shutter

- Electric locking shutter-key operated
- LED lighting in canopy & under all shelves
- Digital controller
- High density CFC-free foamed ends-superior insulation
- Slide out condensing unit on S/C for easy maintenance
- Voltage: 30-40-50 models 115/60/1  
60-80-100 models 115/60/1 + 230/60/1

\* 220/50Hz Available as option

|                          |                          |
|--------------------------|--------------------------|
| KGH-ES-30-S<br>\$15 040  | KGH-ES-30-R<br>\$13 220  |
| KGH-ES-40-S<br>\$16 640  | KGH-ES-40-R<br>\$14 290  |
| KGH-ES-50-S<br>\$17 420  | KGH-ES-50-R<br>\$14 700  |
| KGH-ES-60-S<br>\$19 040  | KGH-ES-60-R<br>\$16 750  |
| KGH-ES-80-S<br>\$23 320  | KGH-ES-80-R<br>\$19 240  |
| KGH-ES-100-S<br>\$33 630 | KGH-ES-100-R<br>\$26 510 |



## OPEN MERCHANDISERS - LOW PROFILE

### KGL-OF Series

- High density CFC-Free foamed ends-superior insulation
- LED lighting in canopy & under all shelves
- Slide out condensing unit on S/C for easy maintenance
- Temperature and defrost regulated by a digital controller
- Standard pull-down night shade
- Voltage : 115/60/1
- \* 220/50Hz Available as option

|                         |                         |
|-------------------------|-------------------------|
| KGL-OF-40-S<br>\$12 880 | KGL-OF-40-R<br>\$11 700 |
| KGL-OF-50-S<br>\$13 990 | KGL-OF-50-R<br>\$12 580 |
| KGL-OF-60-S<br>\$14 940 | KGL-OF-60-R<br>\$13 500 |



## OPEN MERCHANDISERS - LOW PROFILE

### KGL-RS Series

- Locking back doors for rear loading
- Key operated electric shutter
- Digital temperature data logger
- LED lighting in canopy and under all shelves
- Temperature and defrost regulated by a digital controller
- Removable condensate evaporative pan for easy cleaning
- Height adjustable shelves can be tilted
- Product stops on all shelves
- Voltage: 115/60/1
- \*220/50 Hz available as option

|                         |                         |
|-------------------------|-------------------------|
| KGL-RS-40-S<br>\$15 460 | KGL-RS-40-R<br>\$14 730 |
| KGL-RS-60-S<br>\$18 000 | KGL-RS-60-R<br>\$16 910 |



## OVER / UNDER - COMBINATION TYPE CASE

### KGL-OU Series

- Upper section can be operated as refrigerated OR dry
- Tempered glass, rear sliding doors in upper section
- Open front, front loading lower section
- LED lighting in canopy and under all shelves
- Height adjustable shelves can be tilted
- Rear serving shelf
- Temperature and defrost regulated by a digital controller
- Removable condensate evaporative pan for easy cleaning
- Slide out condensing unit for easy maintenance
- Voltage: 115/60/1
- \*220/50 Hz available as option

|                         |                         |
|-------------------------|-------------------------|
| KGL-OU-48-S<br>\$19 530 | KGL-OU-48-R<br>\$18 500 |
| KGL-OU-60-S<br>\$20 780 | KGL-OU-60-R<br>\$19 650 |
| KGL-OU-72-S<br>\$22 050 | KGL-OU-72-R<br>\$20 790 |



## GELATO CASES

### KFM-GL Series

- Lift-up front glass
- Rear tempered sliding glass doors
- Full interior fabricated of stainless steel
- Voltage : 115/60/1
- \* 220/50Hz Available as option

|                         |
|-------------------------|
| KFM-GL-40-S<br>\$27 000 |
| KFM-GL-60-S<br>\$34 920 |
| KFM-GL-80-S<br>\$48 740 |



## DELI CASES - FRESH MEATS

### KFM-CG Series

- Tilt forward front tempered glass
- Rear tempered sliding glass doors
- Special coil with low velocity fans
- Stainless steel interior
- Pull-out condensing unit
- Digital controller
- Anti-condensate system for front glass
- LED canopy lighting
- Voltage : 115/60/1

\* 220/50Hz Available as option

When ordering, please specify  
KFM-CG (curved glass) or KFM-FG (flat glass)

KFM-CG-40-S KFM-CG-40-R  
\$12 070 \$11 220

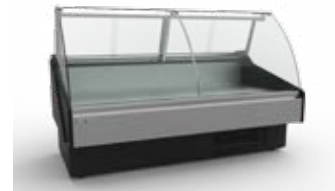
KFM-CG-50-S KFM-CG-50-R  
\$13 160 \$12 110

KFM-CG-60-S KFM-CG-60-R  
\$13 960 \$12 670

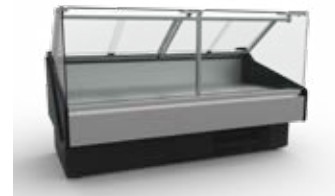
KFM-CG-80-S KFM-CG-80-R  
\$16 850 \$15 020

KFM-CG-100-S KFM-CG-100-R  
\$18 640 \$16 620

KFM-CG-120-S KFM-CG-120-R  
\$20 800 \$18 580



Standard **CG** Curved Glass



Optional **FG** Flat Glass

## DELI-CASES - OPEN FRONT

### KFM-OF Series

- Tempered front & side glass
- Special coil with low velocity fans
- Stainless steel interior
- Pull-out condensing unit
- Digital controller
- Voltage : 115/60/1

\* 220/50Hz Available as option

KFM-OF-40-S KFM-OF-40-R  
\$11 300 \$10 460

KFM-OF-50-S KFM-OF-50-R  
\$12 200 \$11 140

KFM-OF-60-S KFM-OF-60-R  
\$12 760 \$11 440

KFM-OF-80-S KFM-OF-80-R  
\$14 850 \$13 030

KFM-OF-100-S KFM-OF-100-R  
\$16 390 \$14 360

KFM-OF-120-S KFM-OF-120-R  
\$18 300 \$16 050



## SEAFOOD CASES - CLOSED FRONT

### KFM-SC Series

- Tilt forward front tempered glass
- Rear tempered sliding glass doors
- Special coil with low velocity fans
- Stainless steel interior
- Pull-out condensing unit
- Digital controller
- Anti-condensate system for front glass
- LED canopy lighting
- Ice / Fish pans optional
- Cases require floor drains
- Voltage : 115/60/1

\* 220/50Hz Available as option

When ordering, please specify  
KFM-SC (curved glass) or KFM-SF (flat glass)

KFM-SC-40-S KFM-SC-40-R  
\$14 470 \$13 460

KFM-SC-50-S KFM-SC-50-R  
\$15 800 \$14 530

KFM-SC-60-S KFM-SC-60-R  
\$16 770 \$15 200

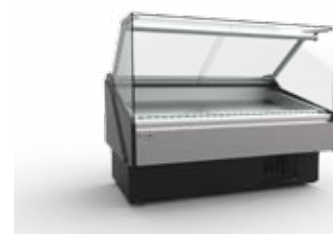
KFM-SC-80-S KFM-SC-80-R  
\$20 210 \$18 030

KFM-SC-100-S KFM-SC-100-R  
\$22 360 \$19 940

KFM-SC-120-S KFM-SC-120-R  
\$24 980 \$22 280



Standard **SC** Curved Glass



Optional **SF** Flat glass



## SEAFOOD CASES - OPEN FRONT

### KFM-SO Series

- Low velocity forced air refrigeration maintains high humidity
- Stainless steel interior
- Silver colored PVC coated steel front panel with black steel kick plate
- CFC free injected foam insulation
- Foamed polystyrene black end panels
- Temperature and defrost regulated by a digital controller
- Slide out condensing unit on S/C only
- Digital thermometer
- Cases require floor drains
- Ice / fish pans optional
- Voltage: 115/60/1

\*220/50 Hz available as option

|                                 |                                 |
|---------------------------------|---------------------------------|
| <b>KFM-SO-40-S</b><br>\$13 560  | <b>KFM-SO-40-R</b><br>\$12 550  |
| <b>KFM-SO-50-S</b><br>\$14 630  | <b>KFM-SO-50-R</b><br>\$13 360  |
| <b>KFM-SO-60-S</b><br>\$15 300  | <b>KFM-SO-60-R</b><br>\$13 740  |
| <b>KFM-SO-80-S</b><br>\$17 800  | <b>KFM-SO-80-R</b><br>\$15 640  |
| <b>KFM-SO-100-S</b><br>\$19 660 | <b>KFM-SO-100-R</b><br>\$17 220 |
| <b>KFM-SO-120-S</b><br>\$21 960 | <b>KFM-SO-120-R</b><br>\$19 270 |



## DELI CASES - PACKAGED MEATS

### KPM-CG Series

- Tilt forward front tempered glass
- Rear tempered sliding glass doors
- Refrigerated rear storage compartment(s)
- Pull-out condensing unit
- Digital controller
- Anti-condensate system for front glass
- LED canopy lighting
- Voltage : 115/60/1

\* 220/50Hz Available as option

When ordering, please specify  
KPM-CG (curved glass) or KPM-FG (flat glass)

|                                 |                                 |
|---------------------------------|---------------------------------|
| <b>KPM-CG-60-S</b><br>\$14 880  | <b>KPM-CG-60-R</b><br>\$13 840  |
| <b>KPM-CG-80-S</b><br>\$16 550  | <b>KPM-CG-80-R</b><br>\$15 070  |
| <b>KPM-CG-100-S</b><br>\$19 210 | <b>KPM-CG-100-R</b><br>\$17 430 |



Standard **CG** Curved Glass



Optional **FG** Flat Glass

## DELI CASES - OPEN FRONT

### KPM-OF Series

- Tempered front & side glass
- Refrigerated rear storage compartment(s)
- Pull-out condensing unit
- Digital controller
- Voltage : 115/60/1

\* 220/50Hz Available as option

|                                 |                                 |
|---------------------------------|---------------------------------|
| <b>KPM-OF-60-S</b><br>\$14 100  | <b>KPM-OF-60-R</b><br>\$12 810  |
| <b>KPM-OF-80-S</b><br>\$14 610  | <b>KPM-OF-80-R</b><br>\$13 110  |
| <b>KPM-OF-100-S</b><br>\$17 300 | <b>KPM-OF-100-R</b><br>\$15 230 |



# WALL-TYPE CASES

## KGV Series



**Self-contained**



**Remote**



**Open Front**

- High volume cases in 3 different styles
- LED lighting under canopy and all shelves
- High density CFC-Free foamed ends-superior insulation
- LED lighting in all doors
- Voltage : 115/60/1 for S/C units of 2+3 doors and all remote units
- \*\* S/C units of 4 doors and more require two (2) individual 115/60/1 circuits
- \* 220/50Hz Available as option

### Medium Temperature Front Doors Only

|                          |                        |
|--------------------------|------------------------|
| KGV-MD-2-S<br>\$14 680   | KGV-MD-2-R<br>\$12 760 |
| KGV-MD-3-S<br>\$18 060   | KGV-MD-3-R<br>\$15 710 |
| **KGV-MD-4-S<br>\$28 230 | KGV-MD-4-R<br>\$24 550 |
| **KGV-MD-5-S<br>\$31 050 | KGV-MD-5-R<br>\$27 000 |
| **KGV-MD-6-S<br>\$33 880 | KGV-MD-6-R<br>\$29 450 |

### Medium Temperature Front & Rear Doors

|                          |                        |
|--------------------------|------------------------|
| KGV-MR-2-S<br>\$17 950   | KGV-MR-2-R<br>\$16 190 |
| KGV-MR-3-S<br>\$23 280   | KGV-MR-3-R<br>\$20 970 |
| **KGV-MR-4-S<br>\$34 710 | KGV-MR-4-R<br>\$31 270 |
| **KGV-MR-5-S<br>\$39 800 | KGV-MR-5-R<br>\$35 860 |
| **KGV-MR-6-S<br>\$44 720 | KGV-MR-6-R<br>\$40 300 |

### Medium Temperature Open Front - Remote Only

|                        |
|------------------------|
| KGV-MO-2-R<br>\$11 700 |
| KGV-MO-3-R<br>\$14 920 |
| KGV-MO-4-R<br>\$21 600 |
| KGV-MO-5-R<br>\$24 120 |
| KGV-MO-6-R<br>\$26 640 |

Cases are shipped in 2 & 3 door or 51-1/2" & 75-3/8" modules

## Options for all models

- Custom color finish – Require Pantone or RAL color - Upcharge of 10%
- Interior of any model in stainless steel finish – Upcharge of 10%
- Exterior of any model in stainless steel finish – Upcharge of 10%
- Lift-up system of front glass | 40" \$1 680 | 50" \$1 750 | 60" \$1 940 | 80" \$2 290 | 100" \$2 370 | 120" \$2 520

# Accessories

## Adjustable Stainless Steel Legs (Set of 4)

KT001A ALL KPM - KFM - KGL - KGH - KBD \$240

## Locking Casters (Set of 4)

KT002A ALL KPM - KFM - KGL - KGH - KBD \$330

## Joining Kit

KT003A ALL KPM AND KFM \$2 140

KT003B ALL KPM AND KFM OPEN CASES \$2 140

KT003C ALL KBD \$240

KT003D ALL KGH \$240

KT003E ALL KGL \$240

KT003F ALL KGV \$240

## Partition

KT004A ALL KPM AND KFM \$980

KT004B ALL KPM AND KFM OPEN CASES \$740

KT004C ALL KBD \$1 160

KT004D ALL KGH \$420

KT004E ALL KGL \$530

KT004F ALL KGV \$330

## Scale Stand With Receptacle

KT005A ALL KPM AND KFM \$470

KT005B ALL KPM AND KFM OPEN CASES \$470

KT005C ALL KBD \$470

## Cutting Board

KT006A ALL KPM AND KFM \$620

## Utensil Holder

KT007A ALL KPM AND KFM \$350

## Product Dividers

KT008A ALL KPM AND KFM \$150

KT008B ALL KBD \$130

KT008C ALL KGH \$130

KT008D ALL KGL \$130

KT008E ALL KGV \$130

## Condensate Evaporative Pans

KT009A ALL KPM - KFM - KBD \$1 390

KT009B ALL KGL AND KGH \$1 430

## Ice / Fish Pans For Seafood Cases

KT-025A 40" KFM-SC / KFM-SF / KFM-SO \$760

KT-025B 50" KFM-SC / KFM-SF / KFM-SO \$930

KT-025C 60" KFM-SC / KFM-SF / KFM-SO \$1 090

KT-025D 80" KFM-SC / KFM-SF / KFM-SO \$1 520

KT-025E 100" KFM-SC / KFM-SF / KFM-SO \$1 850

KT-025F 120" KFM-SC / KFM-SF / KFM-SO \$2 180

## Wire Racks

KT010A EPOXY KFM - 40 \$420

KT010B STAINLESS STEEL KFM - 40 \$730

KT010C EPOXY KFM - 50 \$620

KT010D STAINLESS STEEL KFM - 50 \$1 100

KT010E EPOXY KFM AND KPM - 60 \$620

KT010F STAINLESS STEEL KFM AND KPM - 60 \$1 100

KT010G EPOXY KFM AND KPM - 80 \$830

KT010H STAINLESS STEEL KFM AND KPM - 80 \$1 460

KT010I EPOXY KFM AND KPM - 100 \$1 240

KT010J STAINLESS STEEL KFM AND KPM - 100 \$2 190

KT010K EPOXY KFM - 120 \$1 240

KT010L STAINLESS STEEL KFM - 120 \$2 190

## Step Racks - Single Level

KT011A GRAY KFM - 40 \$240

KT011B STAINLESS STEEL KFM - 40 \$420

KT011C GRAY KFM - 50 \$360

KT011D STAINLESS STEEL KFM - 50 \$620

KT011E GRAY KFM AND KPM - 60 \$420

KT011F STAINLESS STEEL KFM AND KPM - 60 \$620

KT011G GRAY KFM AND KPM - 80 \$470

KT011H STAINLESS STEEL KFM AND KPM - 80 \$830

KT011I GRAY KFM AND KPM - 100 \$590

KT011J STAINLESS STEEL KFM AND KPM - 100 \$1 240

KT011K GRAY KFM - 120 \$710

KT011L STAINLESS STEEL KFM - 120 \$1 240

## Step Racks - Two Level

KT012A GRAY KFM - 40 \$380

KT012B STAINLESS STEEL KFM - 40 \$640

KT012C GRAY KFM - 50 \$560

KT012D STAINLESS STEEL KFM - 50 \$950

KT012E GRAY KFM AND KPM - 60 \$620

KT012F STAINLESS STEEL KFM AND KPM - 60 \$1 000

KT012G GRAY KFM AND KPM - 80 \$750

KT012H STAINLESS STEEL KFM AND KPM - 80 \$1 270

KT012I GRAY KFM AND KPM - 100 \$1 120

KT012J STAINLESS STEEL KFM AND KPM - 100 \$1 900

KT012K GRAY KFM - 120 \$1 240

KT012L STAINLESS STEEL KFM - 120 \$2 000

# Terms & Conditions

|                           |   |
|---------------------------|---|
| <b>Shipment: (F.O.B.)</b> | Plattsburgh NY 12903  |
| <b>Shipping class</b>     | 150 - Insured Cargo   |
| <b>Terms</b>              | 2%--10 days OR Net 30 days upon approved credit.<br>All Remote, Flat Glass, KFM-OF, KPM-OF, KGH-SO, Gelato, Seafood, KGV and Custom cases are available by Special Order and require a 25% non-refundable deposit.  |
| <b>Returns</b>            | All returns are subject to a minimum of 35% restocking fee.<br>** All merchandise must have a return authorization (RMA) issued by MVP ** Must have original packing.   |
| <b>Pricing</b>            | All prices shown are list. MVP GROUP CORP. assumes no responsibility for carrier rates or charges, nor will it make any allowance for prices from freight charges. Prices are subject to change without any notice, and as exist at time of shipment. Export duties and overseas shipping costs not included in prices listed.  |
| <b>Damages</b>            | Merchandise <b>must</b> be inspected <u>prior to the carrier leaving your premises</u> . Damage must be noted in writing on the BOL and pictures must be taken at this time.<br>- For any goods shipped prepaid by MVP Group Corp., and the goods are damaged and/or lost in transit, please call the Logistics Department at MVP immediately (1-888-275-4538 x. 333).<br>- MVP Group Corp. will not be held responsible for damages that are not notated on the BOL or not reported within 5 business days of being delivered.<br>- For goods shipped via 3rd party carrier, any claim for damages or loss must be made by the consignee directly with the carrier. MVP Group Corp. assumes no responsibility for damage or loss while in transit. |
| <b>Shipment</b>           | Whenever feasible, preferred carrier will be used, however we reserve to the right to ship via any responsible carrier. (Air ride suspension - recommended) Rate charges or discrepancies are between carrier and consignee. Returns are not acceptable unless authorized by the factory main office, in writing and RMA is issued. These conditions are the terms upon which an order is accepted and constitutes an Agreement of Sales. MVP GROUP CORP. assumes no responsibility for the product when misused, abused, or incorrectly applied. In any such instance, the warranty becomes null and void.   |

## Warranty

### ONE YEAR PARTS & LABOR WARRANTY\*

MVP GROUP CORP. (HYDRA-KOOL) warrants to the original purchaser of every new HYDRA-KOOL refrigerated unit to be free from defects in material or workmanship, under normal and proper use and maintenance service as specified by MVP Group Corp. and upon proper installation and start-up in accordance with the instruction packet supplied with each unit. MVP Group's obligation under this warranty is limited to a period of one (1) year from the date of original installation.

Any original part covered under this warranty that are determined by MVP Group Corp. to have been defective within one (1) year of original installation shall be limited to the repair or replacement, including the labor charge for defective parts or assemblies. The labor warranty shall include standard straight time labor charges only and reasonable travel time, as determined by MVP Group Corp.

Warranty shall not cover standard wear and tear parts which include door gaskets, incandescent bulbs, LED lamps, or fluorescent bulbs. Warranty also does not cover issues caused by improper installation or lack of basic preventative maintenance which includes, but not limited to regular cleaning of condenser coils.

### ADDITIONAL FOUR YEAR COMPRESSOR WARRANTY

In addition to the one (1) year warranty stated above, MVP Group Corp. hereby warrants its hermetically and semi-hermetically sealed compressors to be free from defects in both material and workmanship under normal and proper use and maintenance service for a period of four (4) additional years from the date of original installation, but shall at no times exceed five (5) years after shipment from the manufacturer.

Compressors determined by MVP Group Corp. to have been defective within this extended time period will, at MVP Group Corp's option, be either repaired or replaced with a compressor or compressor parts of a similar capacity.

The four (4) year extended compressor warranty applies only to hermetically and semi-hermetically sealed parts of the compressor and does not apply to any other parts or components, including, but not limited to: cabinet, paint finish, temperature control, refrigerant, metering device, driers, motor starting equipment, fan assembly or any other electrical component, etc.

**\*RESIDENTIAL APPLICATIONS:** MVP GROUP CORP. assumes no responsibility nor liability for any parts, or labor coverage for component failure, or other damage resulting from installation in residential or non-commercial applications.